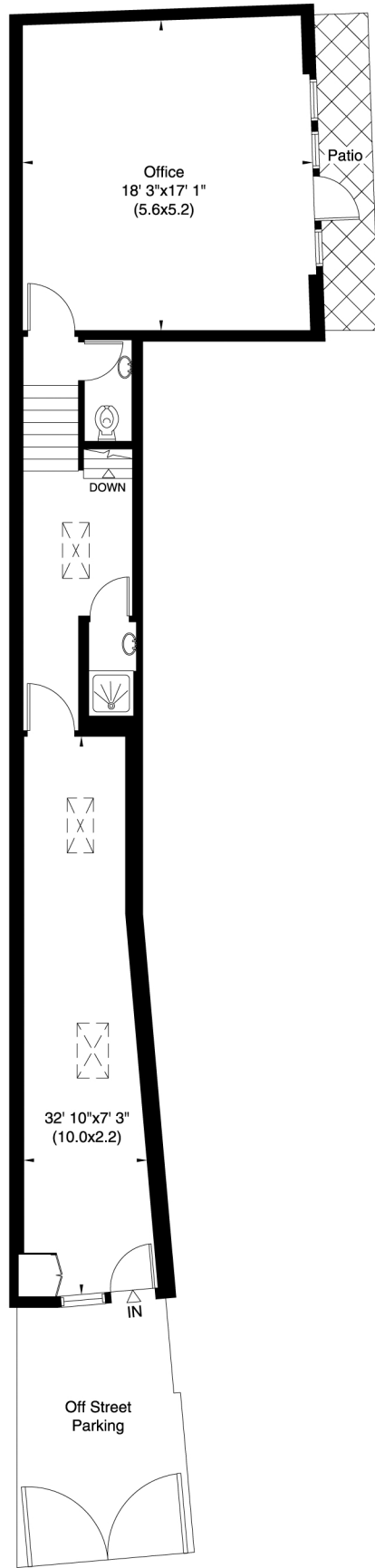
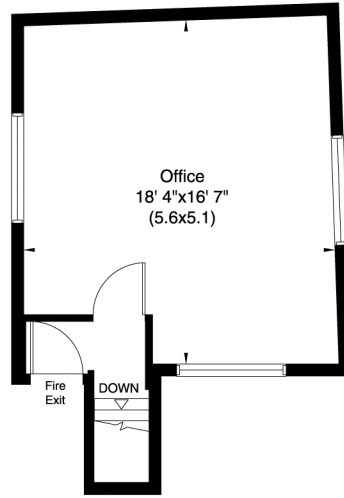


39A TAVISTOCK ROAD  
LONDON W11

Gross Internal Area: 94 Sq. metres  
1007 Sq. feet



Ground Floor



Raised Ground Floor

Not to scale, for guidance only and must not be relied upon as a statement of fact. All measurements and areas are approximate only (and have been prepared in accordance with the current edition of the RICS Code of Measuring Practice).